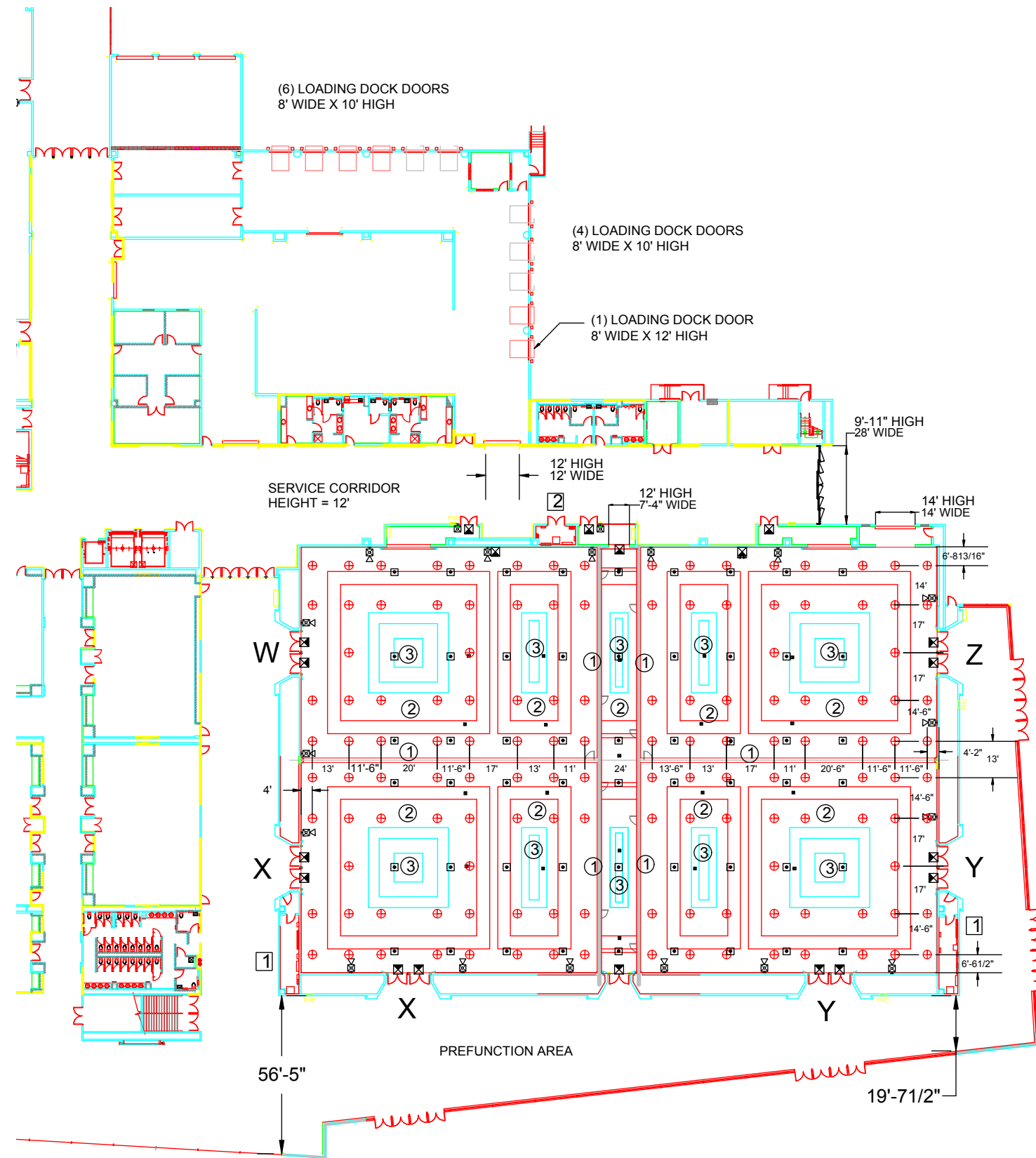


# Hyatt Regency Orlando - Windermere Ballroom



**LEGEND**

EXIT LIGHTING	
FIRE EXTINGUISHER CABINETS	☒
FIRE HOSE CABINET	☐
SMOKE DETECTOR	FHC
FIRE ALARM STROBE	⊙
FIRE ALARM SPEAKER/HORN	⊞
MANUAL FIRE ALARM PULL STATION	⊞
FLOOR ELECTRICAL CONNECTIONS	⊞
CEILING RIG POINTS (MAX LOAD: 1000 LBS PER POINT) (NUMBER OF MAX LOADS: 7 PER TRUSS)	⊙

**BALLROOM ELECTRICAL NOTES**

- ELECTRICAL PANEL
- 1) 400A, 480 VOLT 3 PHASE
  - 2) 225A, 480 VOLT 3 PHASE
  - 2) 100A, 480 VOLT 3 PHASE
- ELECTRICAL PANEL
- 1) 400A, 480 VOLT 3 PHASE
  - 2) 200A, 480 VOLT 3 PHASE
  - 1) 100A, 480 VOLT 3 PHASE
- 29 FLOOR BOX CONDUITS

**BALLROOM DIMENSIONS**

OVERALL DIMENSIONS: 226'-6" X 151'-7"  
 BALLROOM W OR Z: 106'-3" X 75'-10"  
 BALLROOM X OR Y: 106'-3" X 75'-10"

**STANDARD HEIGHTS**

AIRWALL HEIGHT: 29' - 11/16"  
 CEILING HEIGHT: 32'-1"  
 CEILING HEIGHT: 30'-7 7/16"